

# BY DESIGN



## FEATURED DESIGNER SPOTLIGHT

Meet Liz Tate &  
Marta Mitchell

## WHY BUY CHARLESTON FORGE?

Handmade, Customizable  
Made in the USA

## CHARLESTON FORGE HOSPITALITY

Andrew Pearson Glass  
& Stoneline Designs

By Design is a periodic production by Charleston Forge. Its focus is sharing the work of interior designers who use our products as well as to provide information about the company, its affiliates, the products we make, the people who buy them, and the dedicated team that builds them.

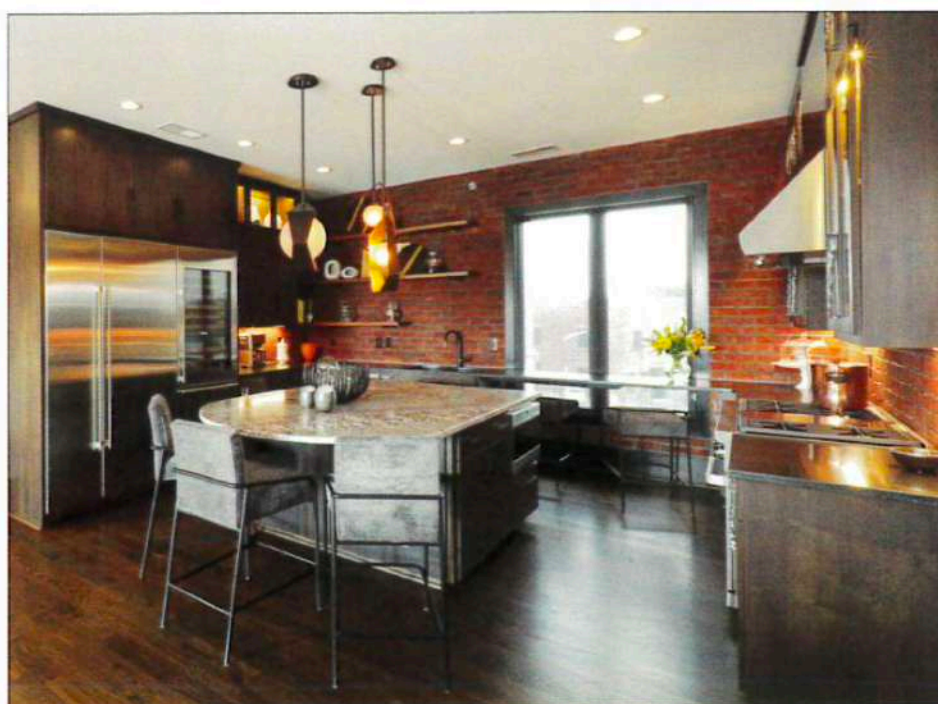


## DESIGNER SPOTLIGHT

# Marta Mitchell

INTERIOR DESIGNER, NC

Marta Mitchell Interior Design is an award-winning, full service interior design firm based in Greensboro, NC. In a career spanning more than 25 years, Marta has done projects across the country and specifies Charleston Forge furniture on a regular basis. While many of the Charleston Forge products Marta uses are in-line pieces, she also takes advantage of the company's custom capabilities on a regular basis. In the downtown Greensboro, NC penthouse project seen here, Marta took inspiration from our Emmitt Lounge Chair to create custom dining chairs and barstools, thus achieving the client's desire for a more contemporary look. In addition to the dining chairs, Marta used Andrew Pearson Glass for the Seascape Fusion glass top on the dining table. For more information about Marta Mitchell, visit [www.martamitchellinteriordesign.com](http://www.martamitchellinteriordesign.com).











An Omega Cocktail Table with textured Seascape Fusion glass from Andrew Pearson Glassworks, mimics the motion of the water that can be seen from all around this New Jersey shore home.



